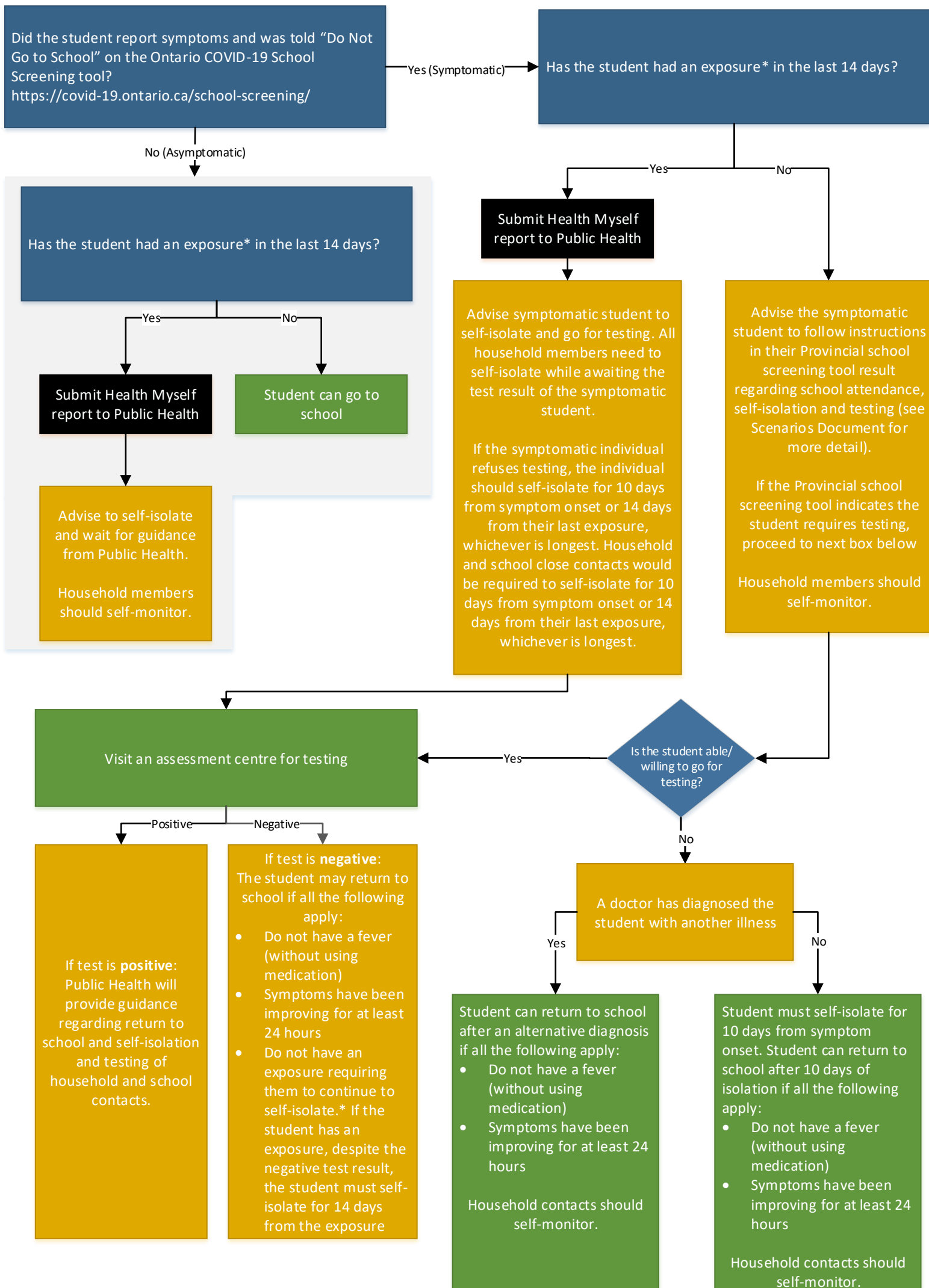


Student Decision Making Tree

Last Updated: October 5, 2020

This document will be reviewed and updated as changes are announced by the Ministry.



*Exposures requiring individuals to continue to self-isolate for 14 days include :

- Close contact with a COVID-19 case
- Travel outside of Canada within 14 days prior to symptom onset
- Been told by a doctor, health care provider, or public health unit to self-isolate